

MERTIK MAXITROL

SENTRY GS Excess Flow Valve SENTRY GT Thermal Cut-Off Device

SENTRY GS Excess Flow Valve (EFV)

Sentry GS EFV for residential installation shuts off the gas flow when a predefined closing flow rate is reached. Factory adjustment (100%) provides a precise closing flow rate. The EFV remains in a stable, open position in the nominal flow range.

The EFV is installed downstream of the Emergency Control Valve (ECV). Sentry GS EFV is equipped with a by-pass orifice that allows the GS to reopen after the downstream line has been repaired and re-pressurized.

Sentry GS EFVs are certified according to:

- New U.K. IGE/G/5 Gas in Flats and Multidwelling Buildings
- Pressure Equipment Directive 97/23/EC
- DVGW-VP 305-1

SENTRY GT Thermal Cut-Off Device (TCO)

Sentry GT TCOs shut off the gas flow at temperatures between 95°C and 100°C. At the release temperature the release mechanism unblocks the shut-off valve. The shut-off valve then moves into the patented contour of the valve seat assuring a lock-tight seal. It remains closed for a minimum of 30 minutes at a temperature of 650°C. The Sentry GT helps prevent gas from flowing to downstream components/sealants that may not be resistant to high temperatures.

Sentry GT TCOs are certified according to:

- New U.K. IGE/G/5 Gas in Flats and Multidwelling Buildings
- Pressure Equipment Directive 97/23/EC
- DIN 3586



Sentry GS Excess Flow Valves



Specifications

See details on label attached to Sentry GS

Ambient Temperature: -20°C to +60°C
 Product Code: GS20FH6LCS
 Thread Connection: 3/4" BS 746 thread with washer supplied
 Nominal Flow Rate V_{Gas} (natural gas d=0.6): 6 m³/h
 Label: green

Type	Type acc. to VP 305-1	Operating Pressure Range	Pressure Drop	Over flow Volume	Installation	Max. Test Pressure (GS in open position)
F	K1, K2/M1, M2	25mbar - 5bar	≤2.5 mbar	max. 30 L/h at 5 bar	between ECV* and service regulator	10 bar

*Emergency Control Valve

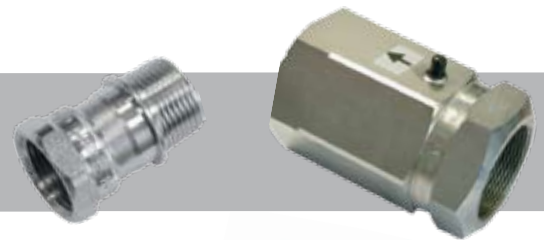
Nominal Flow in m ³ /h	Pressure drop in mbar
3	0.6
4	1.0
5	1.7
6	2.5

All nominal flow values are in natural gas based on a density of d=0.6

Re-opening the Sentry GS: If the Sentry GS is not directly after the ECV, it may be necessary to wait more than 1 minute for the Sentry GS to reset.

NOTE: Open ECV Slowly

Sentry GT Thermal Cut-Off Device



Specifications

Gas Types: Suitable for gases according to DIN EN 437
 Release Temperature: +100°C +0/ - 8K
 Nominal Pressure: MOP 5 (PN 5)
 Max. Ambient Temperature (GT open): +80°C
 Allowable Leakage: < 30 L/h
 Housing Material: Steel
 Connections: Pipe Threading according to EN 10226 (ISO 7-1)
 Flanged Connection according to EN 1092 (ISO 7005-2, PN16)
 Label: Red Tie-On Tag

Sentry GT Thermal Cut-Off Device

NOTE: It is the responsibility of the installer to attach the red identification tag (if required) to the Sentry GT thermal cut-off device.

Models / Dimensions

Order Code	Pipe Size	Inlet		Outlet		Surface Coated	Dimensions / mm			Weight / kg	Cert. No.
		Internal	External	Internal	External		L1	L2	SW		
GT20 DIA	DN 20 (3/4")	I	A	x	x	x	51	34	32	0.10	CE-0085BN0394
GT25DIA	DN(1")						53.8	34.6	41	0.21	CE-0085BN0394
GT50II	DN50 (2")	I	A	x	x	x	135	-	80	2.60	CE-0085BN0395