

Gas Outlet PLUG1 – Flush-Mounted and Wall-Mounted Model

Type 4 according to EN 15069:2008 and DVGW VP635-1, Construction Products Directive 89/106/EWG

OPERATING INSTRUCTIONS

▲ WARNING

Read these instructions carefully. Failure to follow them could result in personal injury and/ or property damage. The product must be installed and operated according to all local regulations.

DESCRIPTION

Connect and disconnect gas appliances quickly and easily with the patented PLUG1 gas outlet. PLUG1 lets you safely move, store, or switch portable appliances - barbecues, patio heaters, and woks. And it has never been easier to service or install stationary appliances such as gas ranges, clothes dryers and gas fire places.

PLUG1 gas outlet is designed to fulfill the following safety requirements:

- An integrated excess flow valve shuts off the gas flow when a predefined closing flow rate is reached.
- A thermally activated shut-off device at the gas inlet of the gas outlet automatically shuts off the gas flow when a predefined temperature is reached.

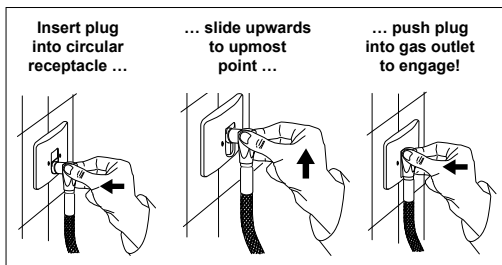


Illustration 1: Operation of the PLUG1 Gas Outlet (above Flush-Mounted Model)

INFORMATION FOR THE END-USER

The cover plate (respectively cover plate and housing) can be loosened and pulled slightly from the wall surface to facilitate renovation work, e.g. painting or replacing wallpaper. To maintain the integrity of the PLUG1 installation, only pull the cover plate from the wall by hand (see illustration 4). Do not use any tools to pry the cover plate from the wall. The use of excessive force could damage the PLUG1 or its connection to the gas line and cause leaks.

Make sure that nothing obstructs the cover plate as it is pushed flush to the wall and re-secured by the screws.

If the procedure of loosening and re-tightening the cover plate is performed according to the above instructions, the gas connection will in no way be compromised. Please contact your authorized gas- installer, if you have any questions.

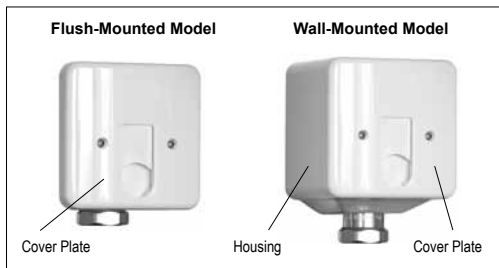


Illustration 2: Flush-Mounted and Wall-Mounted Model

GENERAL NOTES

- Do not subject the PLUG1 gas outlet to open fire or excessive heat. PLUG1 is designed to operate at a maximum ambient temperature of 60 °C (140 °F).
- Do not expose PLUG1 to solvents, oil, grease or other chemical agents. Do not paint PLUG1's cover plate or any of its components. The cover plate may be cleaned with a damp cloth and a mild dishwashing liquid.
- Do not subject PLUG1 to mechanical stress. Proper usage, as depicted in illustration 1, requires no excessive force.
- Use only flexible hoses certified according to DVGW VP 618-2 or DVGW VP 635-2 with PLUG1.

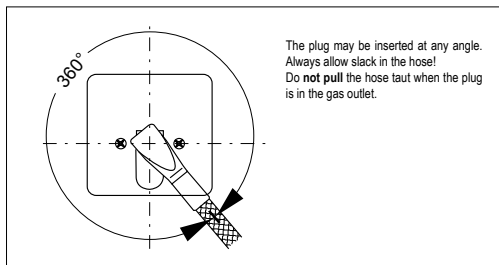


Illustration 3

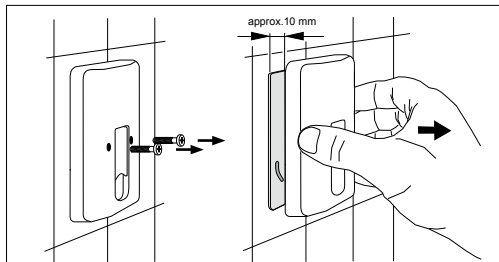


Illustration 4: Loosening the retaining screws on the cover plate (above Flush-Mounted Model)